

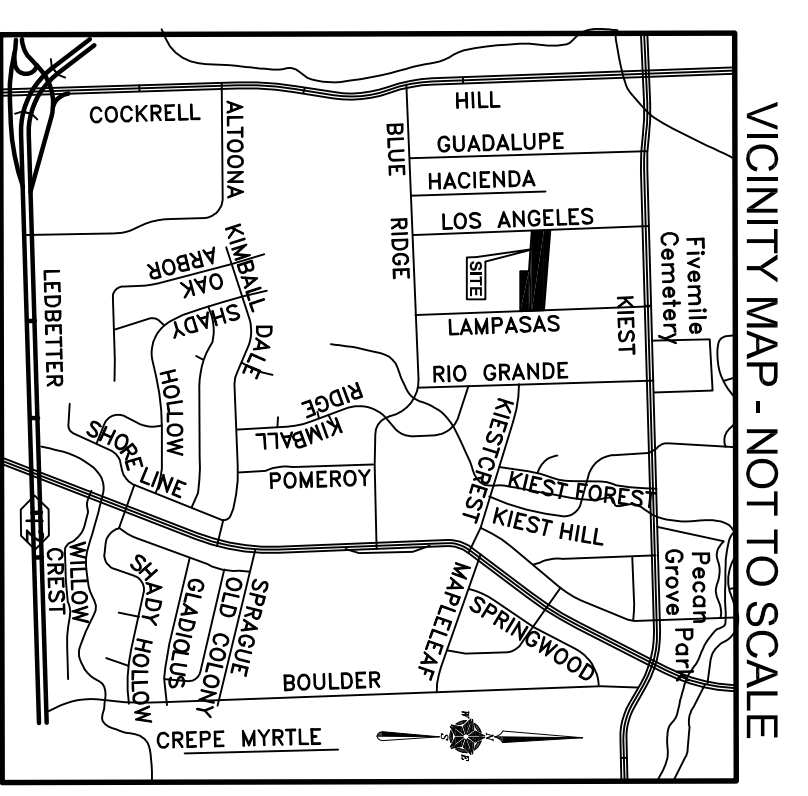
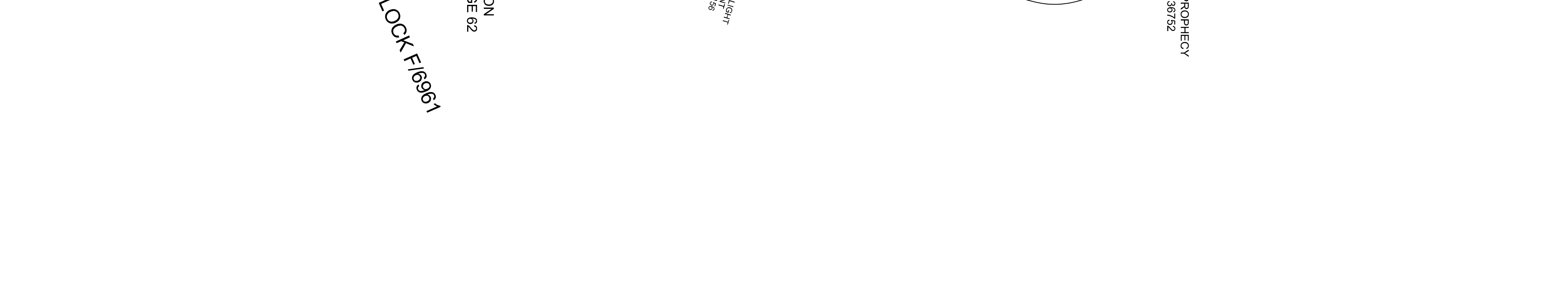
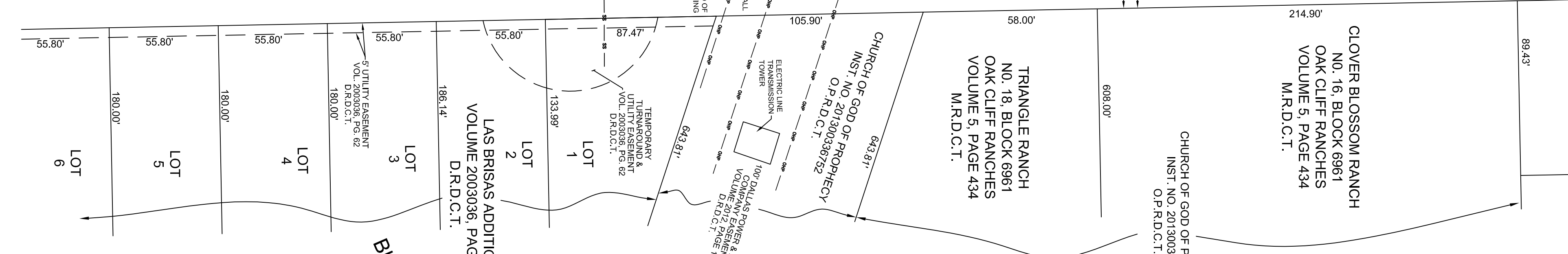
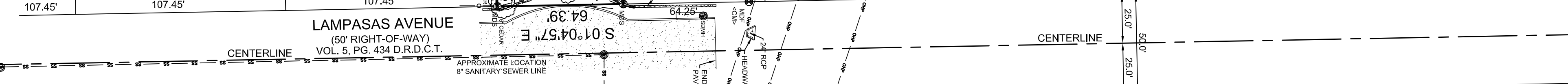
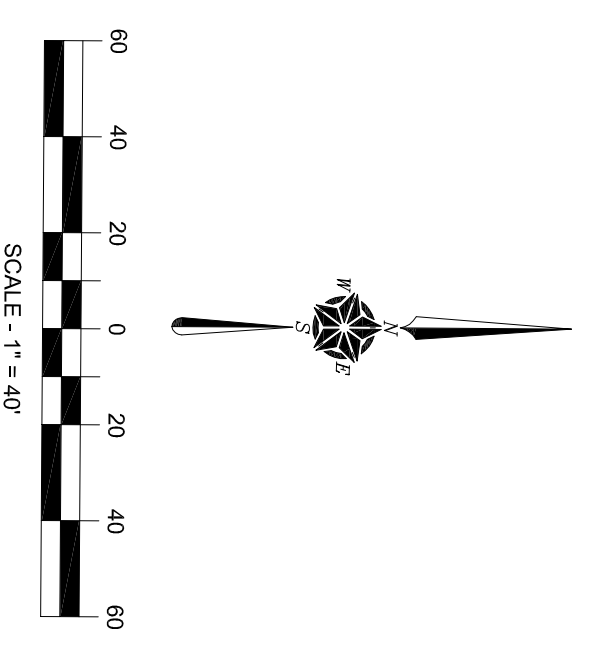
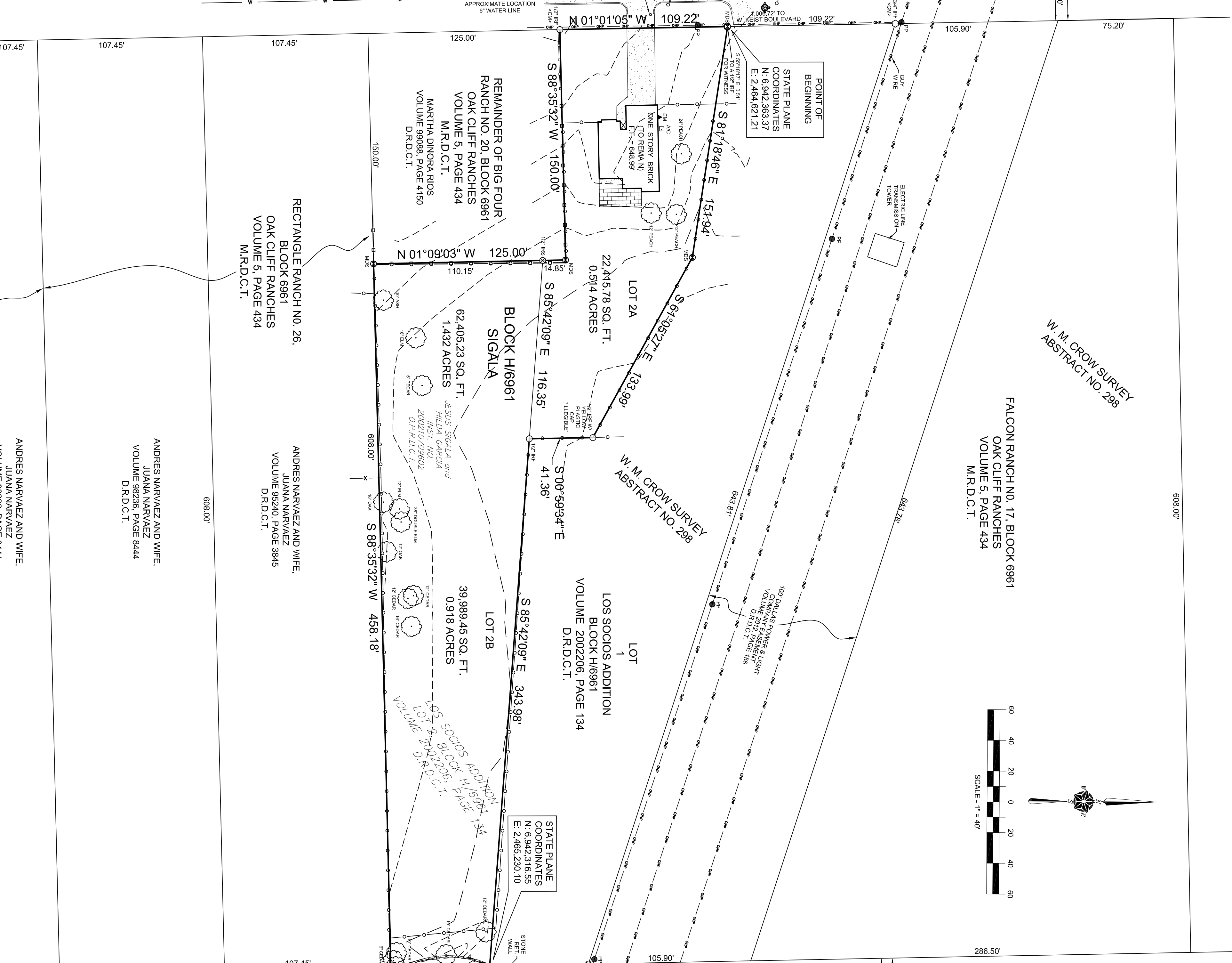
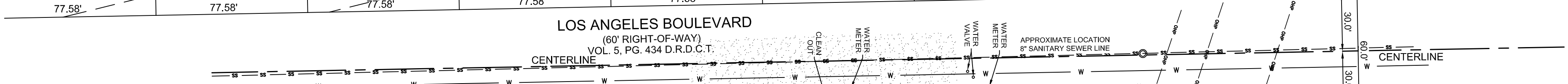
LOT 2, BLOCK A/6961
ED. H. MILLER ADDITION
VOLUME 96107, PAGE 97
D.R.D.C.T.

LOT 16, BLOCK 6961
KIMBALL RANCH ADDITION
VOLUME 834, PAGE 1572
D.R.D.C.T.

LOT 18
KIMBALL RANCH ADDITION
INSTALLMENT NO. 2
VOLUME 67187, PAGE 3866
M.R.D.C.T.

LOT 21
KIMBALL RANCH ADDITION
VOLUME 834, PAGE 1572
D.R.D.C.T.

LOT 23



PRELIMINARY THIS DOCUMENT SHALL NOT BE RECORDED FOR ANY PURPOSES AND SHALL NOT BE USED OR VIEWED OR RELIED UPON AS A FINAL SURVEY DOCUMENT. (1/10/2019)

- 1) BEARINGS ARE BASED UPON THE TEXAS STATE PLANE COORDINATE SYSTEM, NORTH CENTRAL ZONE, NORTH AMERICAN DATUM OF 1983. (2011)
- 2) THE PURPOSE OF THIS PLAT IS TO REPLAT LOT 2 INTO 2 LOTS.
- 3) LOT TO LOT DRAINAGE WILL NOT BE ALLOWED WITHOUT ENGINEERING SECTION APPROVAL.
- 4) ACCORDING TO THE F.L.S.M. PANEL NO. 48113066K, THE SUBJECT PROPERTY LIES IN ZONE X AND DOES NOT LIE WITHIN A FLOOD PRONE HAZARD AREA.
- 5) COORDINATES SHOWN ARE STATE PLANE COORDINATE SYSTEM NORTH CENTRAL ZONE, NORTH AMERICAN DATUM OF 1983 ON GRID COORDINATE VALUES, NO SCALE AND NO PROJECTION.
- 6) DALLAS WATER UTILITIES BENCHMARK 63-B-15: SHOWN ON CONCRETE CURB OR STORM INLET, SOUTHEAST CORNER OF NORTHING: 6,942,289.519; EASTING: 2,487,844.347; ELEVATION: 800.58'
- DALLAS WATER UTILITIES BENCHMARK 63-C-11: SQUARE CUT ON CONCRETE CURB IN CENTER OF RADUS NORTHEAST CORNER OF THE INTERSECTION OF RAVINIA DRIVE AND SOUTHWOOD NORTHING: 6,941,504.588; EASTING: 2,489,833.252; ELEVATION: 826.10'

LEGEND

D.R.D.C.T.	DEED RECORDS, DALLAS COUNTY, TEXAS
M.R.D.C.T.	MAP RECORDS, DALLAS COUNTY, TEXAS
O.P.R.D.C.T.	OFFICIAL PUBLIC RECORDS, DALLAS COUNTY, TEXAS
INST. NO.	INSTRUMENT NUMBER
VOL., PG.	VOLUME, PAGE
SQ.FT.	SQUARE FEET
CONTR. MONUM.	CONTROL MONUMENT
CONTR. MONUM.	CONTROL MONUMENT
3 1/4" METAL DISC FOUND FOR CORNER	3 1/4" METAL DISC FOUND FOR CORNER
SSMH	SANITARY SEWER MANHOLE
SSMH	SANITARY SEWER MANHOLE
PP	POWER POLE
EM	ELECTRIC METER
A/C	AIR CONDITIONER
ROW	RIGHT-OF-WAY
FR	FIRE HYDRANT
OH-P	OVERHEAD POWER LINE
SS-	SANITARY SEWER LINE
W-	WATER LINE
G-	GAS LINE

PRELIMINARY PLAT
SIGALA
LOT 2A & LOT 2B, BLOCK H/6961
REPLAT OF LOT 2, BLOCK H/6961,
LOS SOCIOS ADDITION

TEXAS HERITAGE
SURVEYING, LLC

OWNER
JESUS SIGALA and
HILDA GARCIA
3414 LOS ANGELES BLVD.
DALLAS, TEXAS 75233-2418



10610 Metric Drive, Suite 124, Dallas, TX 75243
Office 214-340-9700 Fax 214-340-9710
kheritage.com
Firm #0169300